

title

*Checklist*

artist

*Various Artists*

Exterior of the Administrative Services Building

**Location:**

The Administrative Services Building is located on the northeast edge of campus on Stange Road. The various works of public art that are on exhibit in the building are located in several locations, including conference rooms and hallways.

**Size:** various**Media:** various**Dimensions:** various**Public Art Philosophy**

Although the Administrative Services Building (ASB) is on the physical edge of campus, the departments housed within the building are integral parts of the university's work. Through our customer-oriented service focus, we reassure, discover, raise questions, and provide answers. ASB public art should connect us to the university's past, present, and future; reflect the creative energy of our continuous improvement work teams; and indicate our support of Iowa State University's land grant mission and strategic plan.

**Checklist for works of art in the Administrative Services Building**

Works of art appear alphabetically by artist's last name. All artist biographies are provided by Olson Larsen Galleries, West Des Moines, Iowa, with the exception of Karen Strohbeen, Bill Luchsinger and Colleen Ernst. Photographs are provided for selected works of art.



*Muted Morning*

1. Gary Bowling  
*Muted Morning*, 1999  
Oil on Canvas, 41 1/4 by 53 1/2  
inches  
Location: 1st floor hallway  
Accession Number: U99.33

Gary Bowling, formerly a professor of art at Westmar College in LeMars, Iowa, is now an independent artist living and working in Lamar, Missouri. Bowling's realistic imagery is inspired by the Midwestern landscape--farmland, vistas of rolling hills from the highway, and brilliant sunset skies. Many of his subjects are commonplace--houses and other components of suburban neighborhoods or barns and fences from a rural farmstead. Bowling often directs our attention to stoplights, winding blacktops, wires and poles and other visual reminders of how man has developed and changed the face of the land. Although his subject matter revolves around sights that we see everyday, the manner in which he translates them creates images to stop and admire.

Bowling's art has been the subject of a one-person exhibition at the Brunner Art Museum in Ames, Iowa and is included in the collections of Norwest Card Services, Farm Bureau Insurance Company, Ernst & Young, U.S. West Communications and Anderson Erickson Dairy among others.



*Fly Me Away and Three Magic Wishes*

2. Sharon Burns-Knutson  
*Fly Me Away and Three Magic Wishes*, 1997  
Acrylic on paper, 43 1/2 x 29 3/4 inches  
Location: 1st floor, near room 1175  
Accession Number: U99.34

Burns-Knutson is an artist from Cedar Rapids who received her Masters of Fine Arts Degree from the University of Iowa and her Bachelor of Arts Degree from the University of Northern Iowa. She has served as a visiting artist at Mt. Mercy College in Cedar Rapids and at the University of Minnesota. She's participated extensively in the Iowa Arts Council's Touring Arts Team as well as their Artist-in-Schools Program. Sharon's work hangs in both public and private collections in Iowa and the Midwest and she's been included in many museum and gallery exhibitions.

Burns-Knutson's art is a fanciful assembly of individual stories and tales. Working with oil paint on a dark surface (black paper), she creates a rich tapestry that from a distance appears to be abstract. Closer inspection reveals the intricate interweaving of many characters, animals and objects of all kinds. Her color usage is always vibrant with the overall effect likened to that of a stained glass window.

(where pictures  
will go)

3. Dennis Dykema  
History of Agriculture-  
Edge of the Storm, Part II, 1998  
Oil on paper, 22 ¾ x 30 inches  
Location: near 1st floor elevators  
Accession number: U2000.52

4. Dennis Dykema  
Study for Cedars by a  
Stream, Part I, 1995  
Oil on paper  
22 ¾ x 30 inches  
Location: Room 1518  
Accession Number: U2000.52

Dennis Dykema is rooted in the rolling countryside of northwest Iowa and his paintings catch the energy of the fertile land. A viewer won't locate a specific place from his images, however, and a European viewer may see a kinship to Van Gogh's later landscapes.

Dykema first attracted popular attention as a potter before concentrating on painting; and his powers of concentration and strength so essential in wheel-work transfer into his paintings. Now working primarily in medium-sized oils on paper, Dykema produces bright and boldly textured paintings that appeal to a wide range of collectors.

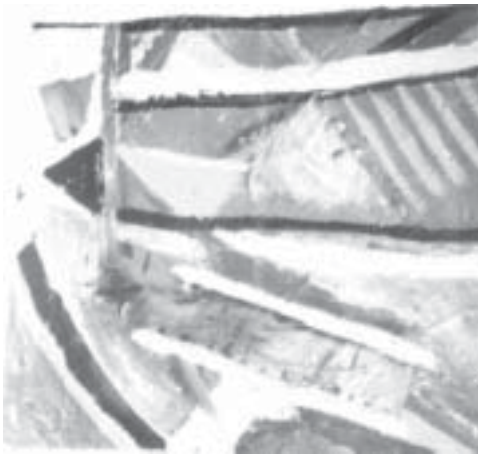
Dykema attended Northwestern College in Orange City, Iowa for his Bachelors of Art and Morningside College in Sioux City and the University of Northern Iowa in Cedar Falls for his Masters of Art. Dykema then settled into Buena Vista College in Storm Lake, where except for sabbatical studies in England, at Notre Dame and the University of Iowa, he has taught for three decades.

Dykema maintains six gallery affiliations, and in the past decade, participated in over 32 selected exhibitions. His medium-sized paintings, whether oils or acrylics on canvas or paper, pass quickly into private collections.

5. Sheryl Ellinwood  
*Return*, 1999  
Metal, acrylic, stones, 31 x 10 ½ x 7 ½ inches  
Location: 1st floor entry  
Accession Number: U99.35

After "a strict religious upbringing, coupled with a 12 year business career, raised ... doubts about values ... practices ... and underlying beliefs of the society that had instilled those values," Sheryl Ellinwood turned to art. Assisted by scholarships, she graduated from the University of Toledo with a Bachelors of Fine Art in 1991. Then, with a graduate fellowship to Southern Illinois University in Carbondale, she pursued her Masters of Fine Art, graduating in 1994. She liked the area around Lake Red Rock after coming to Iowa to visit her father and decided to settle and build her studio there. She sustains herself as a professional glass-blower part of the year, and then concentrates on her sculpture the remaining months.

Ellinwood's invitational exhibitions include galleries in Appleton, Toledo, Cincinnati, Quincy, Peoria, Carbondale and Indianapolis. Her work was included in group exhibitions in Kentucky, Ohio, Iowa, New York, Michigan and Kanazawa, Japan and has been purchased for collections including those of Amoco and several university galleries.



Untitled #4

6. Colleen Ernst  
Untitled #3, 1999  
Watercolor, 8 x 10 inches  
Accession Number: U99.36  
Location: Conference room 1923  
Accession Number: U99.36
7. Colleen Ernst  
Untitled #4, 1999  
Watercolor, 8 x 10 inches  
Accession Number: U99.37  
Location: Conference room 1923  
Accession Number: U99.37

Colleen Ernst has worked as a visual artist, an arts educator, and as an advocate for the arts in the state of Iowa. After graduating from Northwestern University with a degree in art history, she attended school in Iowa City and studied to receive a certification in elementary education. Currently, she works as an arts educator, reaching out to over 400 students a week in the Iowa City public schools. It was during the time that she has taught children that she discovered that to be a better teacher of art, she must become an artist.

Ernst's previous work was devoted to creating sculptures out of found objects, such as old musical instruments, scrap material and other objects she found around her home. She now paints mostly on canvas, concentrating on color and fluidity, stating that, "There's just a pureness about color, a directness. It's just a lot more 'down to it.'" Ernst's works of art can be found in cities such as Chicago, Minneapolis, St. Louis, Des Moines and Iowa City.

8. Sarah Grant-Hutchison  
*Cap of Invisibility*, 1999  
Acrylic on paper, 22 x 22 ½ inches  
Accession Number: U99.39  
Location: Near room 1923
9. Sarah Grant-Hutchison  
*Give Up Your Struggles*, 1999  
Acrylic on Paper, 22 x 22 ½ inches  
Accession Number: U99.38  
Location: Near Controller's office
10. Sarah Grant-Hutchison  
*Green and Fruitful*, 1999  
Acrylic on paper, 22 x 22 ½ inches  
Accession Number: U99.40  
Location: 2nd floor elevators

Sarah Grant-Hutchison has worked as an independent artist in Des Moines since 1982. She holds her Masters of Fine Arts degree in painting from the University of Iowa. Grant-Hutchison will often build up several layers of acrylic paint on her paper allowing her to draw and inscribe into her medium. This process creates a rich array of color and texture. Her art is abstract, but will sometimes include recognizable images such as houses, figures, words or statements scratched into the paint.

Grant-Hutchison has received a Best in Show award from the Iowa Artists Exhibition at the Des Moines Art Center and is also represented in the Art Center's permanent collection. Her work can be found in the corporate collections of Pioneer Hi-Bred International, Maytag Corporation, Hallmark Cards, Hubbell Realty Company, National Travelers Life and The Des Moines Club.



*Rust and Black Field*

- 11. Bobbie McKibbin  
*Rust and Black Field*, 1999  
Pastel on paper, 27 ½ x 35 inches  
Location: Conference room 1155  
Accession Number: U99.43

- 12. Bobbie McKibbin  
*Wildflowers Field*, 1999  
Pastel on paper, 27 ½ x 35 inches  
Location: Conference room 1155  
Accession Number: U99.41



*Wildflowers Field*

- 13. Bobbie McKibbin  
*Weeds and Water*, 1999  
Pastel on paper, 27 ½ x 35 inches  
Location: Conference room 1155  
Accession Number: U99.42

If consistent professional quality and satisfaction to both arts aficionados and a broad general public are standards for ranking, Bobbie McKibbin is probably the most accomplished and successful landscape painter working in the Midwest.

Former *Des Moines Register* visual arts critic Eliot Nusbaum commented more than a decade ago about McKibbin’s “intuitive sense of place.” He wrote, “McKibbin is interested in investigating the character of the landscape and what makes each of these locations unique...(doing it) through...(a) feel for the place, accomplished with a multitude of sense(s) other than visual but which in the end enhance the visual sense. As a result, we get a strong feeling of McKibbin’s reaction to the physical world and—and a good starting point for us to start feeling that world.”



*Weeds and Water*

This intuitive and illuminating spirit of McKibbin lifts each rendering of a specific place to a reassuring confirmation of both the beauty of nature and value of an artistic depiction of it. Fortunately, McKibbin has chosen to remain in the Midwest and create excellent work appreciative private buyers can still afford.

Bobbie McKibbin was born in Philadelphia, graduated with an Masters of Fine Art from Miami University in Oxford, Ohio, and has served for two decades as a professor of art at Grinnell College, Grinnell, Iowa McKibbin has works of art in 51 corporate collections, ten museums or academic settings and commissioned works of art in banks, hotels, hospitals, and other public buildings in the Midwest.

14. Gary Olson

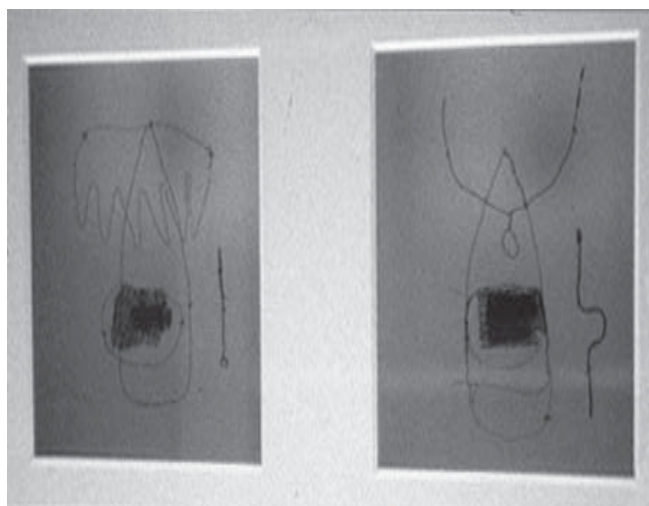
*Untitled XXXVI*, 1999

Metal, wire and wood,  
13 ¼ x 24 ¼ x 3 inches

Location: 1st floor hallway

Assession Number: U99.44

Gary Olson is a teacher and artist from Mitchellville, Iowa. He creates collages or box constructions that mysteriously layer bits of wire, mesh and objects that together create a “floating drawing.” His works are abstract studies but often incorporate found objects such as chalk, fishing lures and dice that function on both a formal and symbolic level.



*Untitled XXXVI*

Olson has been the subject of a one-person exhibition at Central College and has been included in the Iowa Artist Exhibition at the Des Moines Art Center. He received his M.F.A. from George Washington University and his Bachelors of Art in art education from Central College in Pella.

15. John Preston

*Pasture*, 1999

Oil on canvas, 37 x 39 inches

Location: Conference room 1222

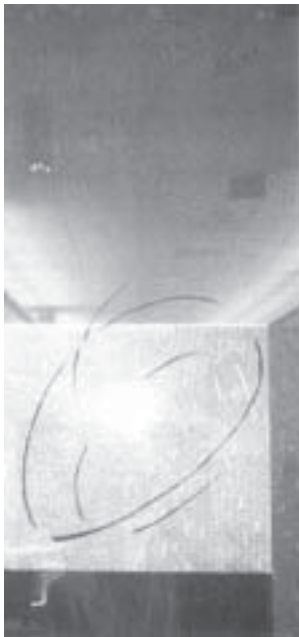
Accession Number: U99.45

John Preston is an independent artist from Fairfield, Iowa. His paintings are directly inspired by the Midwestern landscape and that of southern Iowa in particular. His pastoral scenes portray dramatic skies and beautiful vistas throughout each season of the year. He works from both life and memory often creating what he calls an “image synthesis”- a combination of the real and the imagined. His work is detailed and realistic and he captures the essence of what the landscape means to both those who live there and to those who simply pass through.



*Pasture*

Preston was given a special recognition award for his work on paper in the Iowa Artist’s Exhibition at the Des Moines Art Center and his pastels have appeared in *Artists Magazine* and *Midwest Living*. His work is included in the corporate collections of the Amoco Oil Company, Equitable of Iowa, the Hopkins and Heubner Law Firm, Pioneer Hi-Bred International, Hubbell Realty Company, Iowa State Bank and the Hotel Pattee.



*Light Rain*

16. Jeanine Ryding  
*Light Rain*, 1998  
Woodcut/collage on linen, 51 x 24 inches  
Location: Near room 1183  
Accession Number: U99.46

Jeanine Ryding is an artist originally from Ames, currently residing in Chicago. She received her undergraduate degree from the University of Iowa and her MFA degree from the Hochschule der Kunste in Berlin, Germany. She has been an instructor in printmaking at the Art Institute of Chicago and a lecturer in Japanese print history at the Field Museum and the University of Illinois.

Jeanine uses a woodcut medium that lends itself to the use of intricate and fine lines. Each print is defined by a unique layering and intertwining of texture and color that is a signature of Jeanine's carving and printing techniques.

Jeanine's work has been included in many regional exhibitions both at museums and galleries, and her prints are included in the corporate collections of Hallmark Cards, Farm Bureau Insurance, the 3M Company, Ernst and Young and the City of Ames.



*Tulip*

17. Karen Strohbeen and William Luchsinger  
*Tulip*, 1989  
Painted aluminum, 75 x 17 ½ inches  
Location: Exterior west courtyard  
Accession Number: U89.45b

Karen Strohbeen, a lifelong artist, worked as a painter, printmaker, sculptor, ceramist and television producer. Bill Luchsinger, a printmaker concentrating mostly on digital printmaking, worked as a sculptor, filmmaker and television producer. In 1975, Strohbeen and Luchsinger united when they both took part in an artists' workshop at their alma mater, Drake University. They wed in 1977.

Since then, Karen and Bill have continued to make their art individually and together work in their gardens and produce gardening videos. Karen and Bill have lived on an 80-acre farm in southwest Iowa for 18 years. Their art is in both private and corporate collections around the world.



*Tofu Marinated Landscape*

18 *Everyday Eden*, 1999

Pastel on paper,  
36 ½ x 63 ½ inches  
Location: 1st floor hallway  
Accession Number: U99.47

19 Ellen Wagener

*June Canopy*, 1998  
Pastel on paper, 30 x 59 ½ inches  
Location: Conference room 2145  
Accession Number: U99.48

20. Ellen Wagener

*Tofu Marinated Landscape*, 1995  
Pastel on paper, 37 x 57 inches  
Location: Conference room 2145  
Accession Number: U99.49

Ellen Wagener is an independent artist living and working in DeWitt, Iowa. Her large, highly detailed and realistic pastels depict the landscape of eastern Iowa. She is particularly interested in the changing patterns of the land and the way the seasons and times of day affect the look of a field. Like many landscape painters before her, she draws what she sees and finds great contentment in the beauty and power of the vistas she encounters.

Wagener studied at the University of Iowa and the Corcoran School of Art in Washington, D.C. Her work is included in the collections of Pioneer Hi-Bred International, the University of Iowa Museum, Norwest Banks, the Hotel Pattee, Maytag Company, Allied Insurance and Homesteaders Life Company.

## Administrative Services Building

Accession Numbers U99.33, U99.34, U2000.51, U2000.52, U99.35, U99.36, U99.37, U99.38, U99.39, U99.40, U99.43, U99.41, U99.42, U.99.44, U99.45, U99.46, U89.45b, U99.47, U99.48, U99.49

Additional Information about the Administrative Services Building, other Art on Campus information sheets, and Art on Campus maps are available at the University Museums office - 290 Scheman building (2nd Floor) 515/294-3342 or visit us online at

[www.museums.iastate.edu/](http://www.museums.iastate.edu/)

This information sheet is intended to be used in addition to viewing the Art on Campus. At no time should this sheet be used as a substitute for experiencing the art in person!