

# ELIZABETH & BYRON ANDERSON SCULPTURE GARDEN INTERNSHIP

In this internship, gain practical hands on experience maintaining the University Museums' sculpture garden. You will work with museum staff to plant annuals, perennials and shrubs, maintain the garden with regular watering, weeding and pruning as well as assist in the care of works of art in the garden and in the wider public Art on Campus Collection.

## DATES OF INTERNSHIP

One student will be selected for the **academic semester of spring 2020**, with preference given to those who may extend work into summer 2020.

## RATE OF PAY

Stipend of \$500 per semester, based on a 10 hour per week schedule.

## APPLICATION DEADLINE - NOVEMBER 22, 2019

Interviews held before the end of the fall 2019 semester.

## INTERNSHIP GOALS

The student who is awarded this internship will gain experience in both horticulture and object care and conservation. This internship is well-suited to a student looking to combine skills in arts and science and for those seeking a career in a public sculpture garden environment. The Sculpture Garden Intern will connect with museum professionals to gain hands-on experience in all aspects of caring for a sculpture garden.

## RESPONSIBILITIES MAY INCLUDE:

- Planting annuals, perennials and shrubs
- Developing a garden maintenance strategy
- Watering, weeding, deadheading and pruning plants
- Cleaning sculptures
- Working with the Assistant Curator to conduct condition reports of public art
- Assisting with exhibition installation

## WHO MAY APPLY

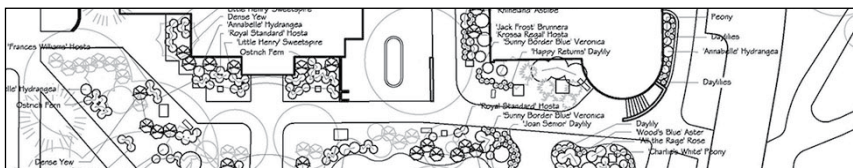
- Recipient shall be enrolled full time in a degree program at ISU
- Student must be an undergraduate
- Applicants must be in satisfactory academic standing and eligible to work as a student employee of University Museums

## THE SUCCESSFUL CANDIDATE WILL ALSO HAVE:

- An interest in horticulture, public art, and museums
- Experience planting and maintaining gardens
- A strong work ethic and the ability to work both independently and in a team
- Flexibility to complete different tasks and balance priorities
- Willingness to work outside in various weather conditions
- Attention to detail

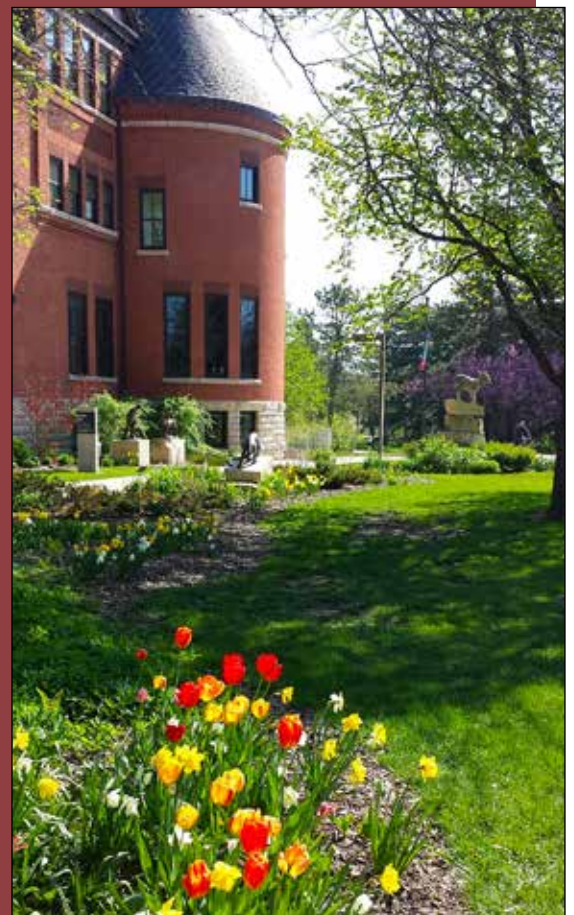
## TO APPLY, FILL OUT THE APPLICATION AT

[www.museums.iastate.edu/learn/students/internship-application-form/](http://www.museums.iastate.edu/learn/students/internship-application-form/)



## IOWA STATE UNIVERSITY University Museums

Since 1975, University Museums has offered professional museum training to Iowa State students from various academic backgrounds through internships and employment programs.



University Museums  
290 Scheman Building  
1805 Center Drive  
Ames, Iowa 50011

515.294.3342

[www.museums.iastate.edu](http://www.museums.iastate.edu)