



FACES
of IOWA
STATE

AUGUST 21 -
DECEMBER 8
BRUNNIER ART
MUSEUM

GRACE OBATA AMEMIYA



FACES of IOWA STATE



Paxton Williams



Marcia Borel

AUGUST 21 – DECEMBER 8
BRUNNIER ART MUSEUM

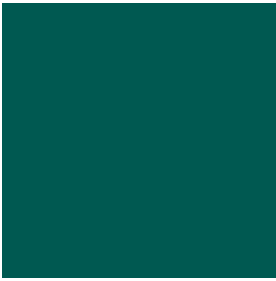
Featuring 39 portraits by Iowa artist **Rose Frantzen**
celebrating the tradition and impact of portraiture
at Iowa State University

Faces of Iowa State celebrates the tradition and impact of portraiture at Iowa State University. This exhibition illuminates contemporary people who are change agents and contributors to Iowa State. *Faces of Iowa State* illustrates stories of a democratic education where the visions, dreams and actions of individuals play a vital role in the shaping of Iowa State's collective identity and culture.

The impetus for these portraits of distinguished Iowa State alumni, faculty, staff and friends began in 2015 with the commission of a dual portrait of George Washington Carver and Henry A. Wallace, *What's Inside this Flower?* by artist, Rose Frantzen. This historical portrait explores the mentorship of student and teacher and the profound impacts of education on individuals, society and indeed, the world. At the 2016 Iowa State Fair, ISU's institutional booth focused on its beautiful campus and beautiful people. Collaborating ISU colleges and units selected 21 people to participate in the portrait project. Over 500,000 Fair attendees witnessed Iowa artist, Rose Frantzen painting two portraits a day during her 10-day residency. After the overwhelmingly positive response the portraits received at the Fair, Frantzen was invited by ISU to establish a portrait studio, this time in the Christian Petersen Art Museum in April 2017, where she was commissioned to paint additional portraits of impactful Iowa Staters.

Portraits are more than simply a record; they illuminate intelligence, importance, virtue, beauty, taste and other qualities of the portrayed person as seen through the eye of an artist. By celebrating these people, this exhibition focuses on the diverse qualities that define the people of a great university. *Faces of Iowa State* portraits are in the University Museums' Art on Campus Collection and continue the portrait tradition.

Faces of Iowa State is organized by University Museums with major support from: College of Agriculture and Life Sciences, College of Business, College of Engineering, College of Human Sciences, College of Liberal Arts and Sciences, College of Veterinary Medicine, ISU Extension and Outreach, University Library, Office of the Vice President for Research, and University Museums, Iowa State University, Ames, Iowa.



Left to right:
 Marcia Henderson Borel
 George Burnet
 Alicia Carriquiry

For more than 70 years, **GRACE OBATA AMEMIYA** kept alive for many Iowans the story of the internment of Japanese Americans during World War II. In 2016, she was inducted into the Iowa Women’s Hall of Fame. In 2015, Japan’s Ministry of Foreign Affairs honored her with the Foreign Minister’s Commendation in Honor of the 70th Anniversary of the End of the War, for her contributions to promote mutual understanding and friendship. “I met many friends and have presented many programs to schools and civic organizations about the Internment,” she said. “I hope my message is that we never want something similar to happen again in the United States.”

AVIS ANDRE has been around the world twice, but always comes back to Ames where she has lived for nearly 70 years. “Iowa always has been my home,” Andre said. “I was born and grew up in northeast Iowa in the small town of Lime Springs.” Andre retired in 1997, serving 25 years as academic fiscal officer in the ISU College of Veterinary Medicine and 14 years in the ISU College of Agriculture and Life Sciences.

MARCIA HENDERSON BOREL (B.A. ’78 family environment) and husband Jim (’78 agricultural business) are proud Iowa Staters wherever they go. The Borels are active ISU supporters. In 2015, they funded the creation of the first artwork for Iowa State by Rose Frantzen, who hails from Marcia’s hometown of Maquoketa and had coincidentally painted Marcia’s mother as part of “Portrait of Maquoketa.”

GEORGE BURNET (B.S. ’48, M.S. ’49, Ph.D. ’51 chemical engineering) is Anson Marston Distinguished Professor Emeritus and retired chair of Iowa State’s Department of Chemical Engineering. “I am George Burnet V and all prior George Burnets were engineers, so the die was pretty well cast for me,” he said. He served as national president of both the American Society for Engineering Education and the Omega Chi Epsilon honor society. He served on committees and panels of the National Science Foundation, the Department of Energy, and other organizations.

ALICIA CARRIQUIRY (M.S. ’86, Ph.D. ’89 statistics) is a Distinguished Professor of Statistics at Iowa State whose work has helped people better understand and measure what they eat with regard to nutrition. During her 26-year career, Carriquiry developed statistical methods to better measure food consumption, specifically, nutrient intake. She was elected in 2016 to the National Academy of Medicine for the work she has done to advance the understanding of nutrition and dietary assessment.

JAY CHAPMAN (B.S. ’90, M.S. ’93 aerospace engineering) grew up in Spirit Lake and now lives in Urbandale, where he is a risk management manager for Wells Fargo. His passion, however, lies with the Iowa State Cyclones. From Cyclone athletics to the ISU Alumni Association to the Alumni Band, Chapman shows up almost everywhere there is cardinal-and-gold, helping the university with his time and talent. His personal philosophy reflects his Cyclone passion and what he learned at Iowa State: “Make that extra effort.”

MIRIAM DE DIOS WOODWARD (B.A. ’04 Management and Marketing) is CEO of Coopera in Des Moines; the only Hispanic market consulting firm in the nation specializing in advisory services for credit unions in the growing U.S. Hispanic market. She is the youngest CEO in her organization’s family of companies and serves as senior vice president for Affiliates Management Company, Coopera’s parent company. “I believe you need to work hard, always be learning, be proud of your heritage and upbringing, be gracious and generous and take time to develop others.”

LARRY H. EBBERS (B.S. ’62, M.S. ’68 agriculture education, Ph.D. ’72 higher education), among his many hats, could be considered the “godfather” of community college leaders in Iowa. Ebbers was the face of ISU’s Department of Educational Leadership and Policy Studies for decades, retiring in 2016 as University Professor. Through his work as director of the Community College Leadership Program and director of the Community College Leadership Consortium, and the Leadership in the New Century programs, Ebbers played a key role in developing and promoting Iowa’s community college system, as well as championing the advancement of women and people of color as leaders in higher education.

SIMON ESTES (’97 honorary doctorate) is an internationally acclaimed opera singer who brings music to Iowa State students as the F. Wendell Miller Distinguished Artist-in-Residence. Estes has performed for kings and queens, six U.S. presidents and two popes, with 115 orchestras, with 84 international opera companies and on six continents. Estes’ scholarships have opened doors to higher education for many young people, and his community concerts have raised funds for Iowa flood and tornado relief. The Simon Estes Foundation, in partnership with the United Nations Foundation, also has raised more than \$500,000 since 2013 to support malaria prevention for children and families in Africa. In July 2017, the United Nations Foundation honored Estes and his wife, Ovida, with its Lifetime Impact Award for their work in this international effort.

Left to right:
 Jay Chapman
 Miriam De Dios
 Woodward
 Larry H. Ebbers
 Simon Estes





Left to right:
Evan Fritz
Wayne Fuller
Mary Giese

ROSE FRANTZEN was born, raised, and returned to Maquoketa, Iowa. The rural lifestyle and landscape are a constant source of inspiration for her paintings. She attended the American Academy of Art in Chicago, the Palette & Chisel Academy in Chicago, and the Lyme Academy College of Fine Arts in Old Lyme, Connecticut. Frantzen's *Portrait of Maquoketa* began as a project to document the people of her hometown and developed into 180 portraits which were then exhibited at the Smithsonian's National Portrait Gallery. Frantzen is a frequent demonstrator, guest lecturer, and panelist discussing art and the artist's life in the 21st century at museums and national art conventions.

EVAN FRITZ (B.S. '16 kinesiology) is a Rising Star. In fact, he was one of the first Rising Stars, an ISU Extension and Outreach internship program that began in 2014 to help Iowans better understand their local food system and the benefits of consuming locally grown food. Currently, Fritz is marketing coordinator for Winnebago Coop Telecom Service in Lake Mills, Iowa. He is a native of the Worth County town of Northwood. Like many rural youth, he was active in extension's 4-H Youth Development program, delving into numerous topics over nine years.

WAYNE FULLER (B.S. '55 agricultural business, M.S. '57 and Ph.D. '59 agricultural economics) Iowa State University Distinguished Professor Emeritus in statistics and economics, is a beloved mentor and internationally recognized scholar, known for his keen insights into the meaning of data. Throughout his 50-year career in statistics, Fuller has been considered a leading researcher with seminal textbooks and articles in three distinct fields – time series analysis, measurement error models, and sample surveys – a feat rarely achieved. He has received numerous prestigious awards from professional societies as well as from Iowa State, and has worked closely with many government agencies seeking to improve the information they provide to the public.

MARY GIESE (B.A. '68 child development/elementary education) is rooted in the land-grant university principles of education and service. This retired teacher and school administrator from Marshalltown embodies the 900 Iowans elected to county councils throughout the state who work with Iowa State University Extension and Outreach. Their shared goal: to provide education and build partnerships designed to solve today's problems and prepare for the future. It's not surprising that her personal philosophy is familiar to many: "I try to live the 4-H motto: Make the best better."

MATTHEW GOODE (B.S. '17 materials engineering) proves that childhood dreams can come true, no matter the size of your hometown. Living most of his life in the tiny town of Coggon in eastern Iowa, Goode and more than 100 members of Iowa State's solar car team have developed the world's first solar utility vehicle. "I encourage everyone to follow their passions," he said. "Often students in these small towns are told they can never achieve their goals. This car is proof that it does not matter where you are from, you can do the impossible."

CAROL GRANT (B.A. '52 home economics) has been a docent, donor and friend of Iowa State's University Museums for more than 40 years. A couple of "chance encounters" while an Iowa State student set the stage for her passionate service to the arts. At 86, Grant chairs the University Museums Curator's Associates; she also is member and former chair of the University Museums Advancement Council. In 1992, she was elected to the ISU Foundation Board of Governors and became Governor Emeritus in 2015. Her enthusiasm and drive helped to expand University Museums to include the Christian Petersen Art Museum (formerly Morrill Hall on central campus) and the Anderson Sculpture Garden.

MARY JANE SKOGEN HAGENSON (B.S. '74 physics and mathematics, M.S. '76 and Ph.D. '80 biomedical engineering) used her three Iowa State degrees to become a successful scientist, technology leader, and corporate executive. A native Iowan, Hagenson grew up on the Skogen farm near Thompson, the oldest of four daughters. She greatly valued the farm experience which lead her to learn, contribute, and develop a strong work ethic. Among her many honors, in 2013, she was inducted into Iowa State University's Chemical & Biological Engineering Alumni Hall of Fame. In 2015 she received ISU's top award for engineering achievement, the Anson Marston Medal, and was inducted into the Tau Beta Pi Engineering Society.

STEPHANIE HANSEN (B.S. '02 animal science) is an associate professor of animal science at Iowa State and a leading cattle nutrition researcher who works with veterinarians, animal nutritionists, biochemists, and extension personnel to improve the efficiency of beef cattle production. Hansen now runs the Hansen Ruminant Nutrition Lab, where she has been granted more than \$7 million for her research. Her most recent grant from the U.S. Department of Agriculture is to study the use of zinc to support growth in cattle. Her research already has had a significant impact in Iowa.

Left to right:
Matthew Goode
Carole Grant
Mary Jane Skogen
Hagenson
Stephanie Hansen





Left to right:
Norm Hill
Kathy Howell
Petrina D. Jackson
Lori Jacobson

NORM HILL truly is a “mover, not shaker” of art on campus. He is planning his retirement in early 2018 as Director of Logistics and Support Services, capping a 26-year career at Iowa State University. Hill and his team at Central Stores provides expert support to University Museum projects and staff. From moving the entire Christian Petersen Art Collection to the newly renovated Morrill Hall in 2007, to trips spanning New York, California, Tennessee and Oregon, Hill has traveled campus and the greater United States to pick up and deliver millions of dollars in works of art for Iowa State’s campus and museums.

KATHY HOWELL (B.S. ’68 mathematics) retired from an extensive career in computer programming and management, but her love is for the arts. Originally from the southwest Iowa community of Crescent, Howell was a software development programmer, manager, and executive at International Business Machines, an information systems provider for Fortune 500 companies. Howell and her husband, John, first got involved with University Museums by providing financial support for the John Bloom Retrospective. That was the beginning of a long relationship including the recent project of funding University Museums’ new website and online collection database engine, eMuseum, which was launched in 2016. Thanks to this couple, information about Iowa State’s 30,000 art objects can be accessed from anywhere in the world.

PETRINA D. JACKSON (M.A, ’94 English) loves Parks Library, her favorite spot on campus, because it’s the center of student life. She was lured back to Iowa State – and the library – in 2016 after two decades in the field of library sciences and archives, where she currently directs the Special Collections and University Archives. Jackson’s interest is in primary source instruction and archival outreach to underdocumented and underrepresented communities.

LORI JACOBSON (B.S. ’80 history, B.A. ’80 advertising design) followed her passion for work in the museum world, learned as a student employee at University Museums, and directs her own Los Angeles consulting firm that specializes in museum planning. Jacobson, who grew up in the Story County community of Roland, said Iowa State was “familiar and highly appealing” as her college of choice. However, a part-time job at University Museums while a student launched Jacobson’s career. She formed her current company in 2013, offering project management and planning for museums.

KAREN KOLSCHOWSKY and **JERRY KOLSCHOWSKY** (B.S. ’62 agricultural business) are one of Iowa State’s most active and generous couples. Jerry is the retired chairman and co-CEO of OSI Industries, LLC, a company he helped lead to become one of the world’s largest providers of processed meats, poultry and related products. Karen is a graduate of Michigan State University, and has been active with Jerry in many of his business efforts, including trips to other parts of the world, where they saw firsthand the devastation caused by poverty and hunger. In 2004 the Kolschowskys accompanied ISU College of Agriculture and Life Sciences officials on a trip to Uganda. Almost immediately after that trip, the Kolschowskys announced a commitment to create and permanently endow the ISU Center for Sustainable Rural Livelihoods. The endowment now totals more than \$10 million. Since 2004, the Center has touched thousands of people in Uganda’s Kamuli District. The Kolschowskys have helped build other ISU programs including University Museums, athletics, the Intensive Livestock Teaching and Research Facility, and the General University Fund for Excellence. They also established the Gerald A. and Karen A. Kolschowsky Foundation Scholarships for minority students in agriculture.

WARREN KUHN, Emeritus Professor and retired Dean of Library Services, was affectionately known as Mr. Library wherever he went. His career at Iowa State was marked with a major expansion of research and study space, special collections, and the inauguration of private endowments to ensure the future success of the library as the “heart of a university.” Kuhn arrived at Iowa State to direct the library in 1967. He was named the first Dean in 1971, and served until his retirement in 1989. He shepherded the 1983 addition to the University Library (now Parks Library), which won national awards for the architects. “During my tenure at Iowa State, I was pleased to see the collections triple and that we were able to add new departments and services.”

MONICA SHOPE LURSEN (B.S. ’72 dietetics) is a champion for nutrition and dietetics in the state of Iowa. The fourth-generation Iowa farmer serves as the executive director of the Iowa Academy of Nutrition and Dietetics. In addition to managing the farm, Lursen has served as a nutrition therapy manager, a diabetes program coordinator, a certified LifeSteps facilitator, a corporate dietitian, and a nutrition educator. She is a past member of the ISU College of Human Sciences Dean’s Advisory Council. In 2011, she established a scholarship in her husband’s memory in the College of Agriculture and Life Sciences.

Left to right:
Warren Kuhn
Monica Shope Lursen





Left to right:
Joe Lyon
Surya Mallapragada
Dave Miller
Ed McCracken

JOE LYON (B.S. '51 dairy science) is a state and national leader in the dairy industry, an internationally recognized dairy cattle judge, and the husband of Norma “Duffy” Lyon ('51 dairy science), who sculpted the butter cow at the Iowa State Fair for nearly 50 years. Except for his four years at Iowa State and six months with the extension service in Greene County, Lyon has made his home on a three-generation Jersey dairy farm in Tama County near Toledo. Lyon played a critical role in the creation of several Iowa and Midwest dairy industry associations. The Lyon Jerseys partners — Joe, and his son Eric ('76 dairy science) — received the American Jersey Cattle Association’s prestigious Master Breeders Award.

SURYA MALLAPRAGADA is an award-winning polymers researcher and innovator whose 20-year career at Iowa State University is paving the way for nanotechnology to deliver vaccines and genes to improve human health. At Iowa State she is the Anson Marston Distinguished Professor and Carol Vohs Johnson Chair in Chemical and Biological Engineering. She is also an Associate Vice President for Research. Her work has been recognized nationally and internationally, winning her many awards, more than 150 published papers, and invitations to speak all over the world.

DAVE MILLER (B.S. '75 electrical engineering) was Associate Vice President for Facilities, Planning and Management, and directed the planning, design, construction, and maintenance of all campus utilities, facilities and grounds. After a 33-year career at Iowa State, Miller retired in January 2017. During his tenure, Miller was instrumental in developing the Utility Enterprise, a successful business model that allows planning and construction of utility systems to support campus growth. He also led many initiatives to improve campus sustainability and beautification, erect wind turbine and solar panels near the power plant, and address deferred maintenance needs of the university.

ED MCCRACKEN (B.S. '66 electrical engineering) took his degree to Silicon Valley, where his leadership in the computer industry opened a new world of visual effects for Hollywood. Between 1995 and 2002, every movie nominated for an Academy Award for visual effects used computers from McCracken’s company, Silicon Graphics, to create and manipulate 3-D images, including *Jurassic Park* and *Forrest Gump*. In 1995, McCracken was named Executive of the Year by *R&D* magazine and was presented the National Technology Medal award by President Clinton. He also received the ISU Alumni Association’s Distinguished Alumni Award.

Laurie Meythaler-Mullins (B.S. '01 animal ecology, DVM '08 veterinary medicine) is an associate veterinarian at the South Des Moines Veterinary Center, a small animal practice near Blank Park Zoo. In many ways, she represents today’s *Gentle Doctor*, the unofficial symbol of Iowa State’s College of Veterinary Medicine. Meythaler-Mullins is president of the Greater Des Moines Veterinary Medical Association, and past-president of the ISU Veterinary Medical Alumni Association. She has served on the Executive Board of the Iowa Veterinary Medical Association, and now works on their Wellness Committee (a topic close to her heart). In 2010, she became a Certified Veterinary Acupuncturist through the International Veterinary Acupuncture Society.

CHARLES MORRIS was born in Springfield, IL. He received his BFA at St. Louis University in 1984. Morris has worked as a portrait artist since 1979. Along with his wife, Rose Frantzen, the artist couple owns and shows their work at the Old City Hall Gallery in Maquoketa, Iowa. Morris is also the co-founder and Vice President of Maquoketa Art Experience, a non-profit organization established in 2008 and located in downtown Maquoketa, Iowa. MAE is dedicated to arts education, fostering appreciation of the arts and to building community by engaging the residents of Maquoketa and surrounding areas in diverse creative activities.

DYNETTE MOSHER (B.S. '81, M.S. '84 home economics education) of Ames touches the lives of thousands of Iowa State alums and Iowa 4-Hers every year. She is director of alumni relations for Iowa State’s College of Human Sciences. She also has judged 4-H and educational presentations at the Iowa State Fair for several years. While judging, she builds on the 10 years she worked as an Extension home economist. Mosher is actively involved in Mosher Angus Farm, a five-generation family farm in Liscomb in northern Marshall County where her parents, brother and family raise purebred Angus cattle, sheep, corn, soybeans and alfalfa.

CHARITY NEBBE (B.S. '97 political science, English and biology) is a familiar voice for many Iowans as host of Iowa Public Radio’s daily Talk of Iowa show. Nebbe said she fell in love with public radio while in high school, and was thrilled to learn that Iowa State at that time operated a public radio station on campus. “I started working at WOI Radio in the Communications Building in 1994 as a student employee and found myself among incredibly talented and generous radio professionals,” she said. “Doug Brown, Don Forsling, Karen Bryan and Jake Graves influenced me the most. I still think of things they taught me every day.”

Left to right:
Laurie Meythaler-
Mullins
Dynette Mosher
Charity Nebbe





Left to right:
Suku Radia
Eric J. Schares

OWEN NEWLIN (B.S. '51, M.S. '53 agronomy) could be considered a pioneer in the seed industry and in research and higher education philanthropy. As senior vice president of Pioneer Hi-Bred International, Inc., Newlin chaired the 1988 Partnership for Prominence campaign that raised a record \$214.5 million for Iowa State. He served as a member of the Iowa Board of Regents for 12 years, eight years as president. He is a Fellow of the American Society of Agronomy, the Crop Science Society of America, and of the American Association for the Advancement of Science. In 2017, the Seed Science Center at Iowa State University honored Newlin with a Distinguished Lifetime Achievement and Service Award for Seed Science, Technology and Systems.

SUKU RADIA (B.A. '74 accounting) is one of Des Moines' most prominent business leaders, having served a decade as CEO of Bankers Trust, Iowa's largest independently owned bank with assets exceeding \$4 billion. Previously, he was chief financial officer of media giant Meredith Corporation and managing partner of KPMG, both based in Des Moines. He will retire in early 2018. In 2010, he was inducted into the Iowa Business Hall of Fame and was also named the Onelowa Business Leader of the Year. The Des Moines Business Record named him *Most Influential Business Leader* five consecutive years and *Best CEO* three consecutive years. "My advice is simple: Take care of family first and strike a balance between your career and your civic life. There are no shortcuts and become a life-long learner."

ERIC J. SCHARES (B.S. '05 electrical engineering) was like many other college graduates. He left Iowa, degree in hand, for adventures in the western United States and a career as an engineer. But in the back of his mind, he knew he'd return. While working full-time as a senior NAND engineer at Intel in Portland, Schares enrolled in the Rutgers University Master of Library and Information Science degree program. "My goal was to become the engineering librarian at ISU," he said. "I got my degree in 2012 and waited for the position to open. It finally did, and I was lucky enough to get it; we moved back to Ames in the summer of 2015."

SHIRLEY STAKEY (B.A. '57 home economics education) is an Iowa State Fair legend and the "Face of 4-H" for hundreds of Iowans since serving as superintendent of the 4-H Exhibit Building for 26 years. She provided oversight for the state 4-H award recognition process and state judges training. She also worked 35 years at Iowa State University Extension, eventually helping to operate the program that had helped her find her way in the world. Among the many recognitions she has received are the ISU College of Home Economics Helen LeBaron Hilton Award, the ISU Alumni Association Superior Service Award, and the National Association of Extension 4-H Agents Distinguished Service Award. Fittingly, the year Stakey retired she received the Iowa 4-H Alumni Award at the Iowa State Fair. In 2017 she was also awarded the Iowa 4-H Foundation Individual 4-H Supporter Award.

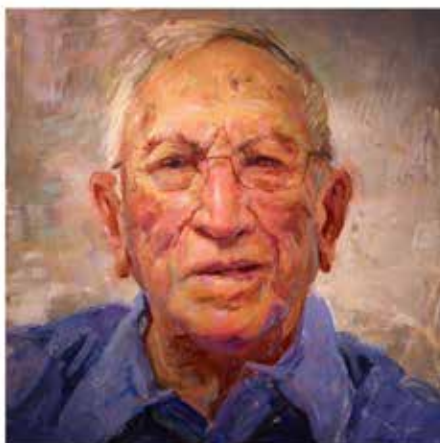
JANEANN STOUT (B.S. '71, M.A. '74 applied art) has used her art background to solve problems. She retired in 2008 as Associate Dean for Extension in Iowa State's College of Family and Consumer Sciences (now the College of Human Sciences) and as Director of Iowa State University Extension to Families, and as an Associate Professor of Design. During her 34-year career, Stout influenced thousands of Iowans through award-winning programs that ranged from a tour of art by Hmong and Tai Dam refugees in Iowa, to nutrition education and family camps for parents and their children.

PAXTON WILLIAMS (B.A. '00 communications studies and political science) is well-known for his portrayal of one of the nation's greatest agricultural scientists and one of Iowa State University's most famous and distinguished alumni — George Washington Carver. As an Iowa State honors student, Williams wrote a one-man play, *Listening to a Still Small Voice: The Story of George Washington Carver*. The play premiered in 2000, the year he received his undergraduate degree in communication studies. Since that time, Williams has presented the play in 24 U.S. states and in England. In 2008, ISU's College of Liberal Arts and Sciences honored Williams as Outstanding Young Alumnus. A native of Mississippi reared in Indiana, Paxton lives in Des Moines, where he is currently an Assistant Attorney General in the Office of the Iowa Attorney General.

Left to right:
Shirley Stakey
JaneAnn Stout
Paxton Williams



FACES of IOWA STATE



Joe Lyon

ABOUT THE *FACES OF IOWA STATE* PROJECT

The portrait tradition at Iowa State University began in the 1930s, in the depths of the Great Depression, when Iowa State College (now University) was commissioning portraits at a remarkable pace. For over a decade, portraits were commissioned to commemorate the college's heritage and legacies, the portraits portrayed Iowa State presidents, deans, accomplished faculty, and heralded alumni by well-known regional and national artists.

Beginning in the 1990s, Iowa State actively resumed commissioning formal portraits of deans, selected department chairs, and accomplished faculty as a means of celebrating, commemorating, and honoring Iowa State's cultural legacy.

EVENTS OPEN TO THE PUBLIC

August 21, 2017 4:30–6PM
Exhibition Opening Reception
Brunnier Art Museum

October 10, 2017 7-8:30PM
Artist Reception
Brunnier Art Museum

ABOUT THE *FACES OF IOWA STATE* TOURING EXHIBITION

The exhibition will go on the road in Iowa following its conclusion at the Brunnier Art Museum to the following locations (*subject to change*):

Maquoketa Art Experience
December 9, 2017-February 12, 2018

Muscatine Art Center
February 15-April 15, 2018

Pearson Lakes Art Center
April 26-June 23, 2018

Blanden Art Museum
August 4-October 14, 2018

Harvester Artspace Lofts Exhibit Gallery
November 4-December 31, 2018

EXHIBITION SUPPORT

Faces of Iowa State is organized by University Museums with major support from: College of Agriculture and Life Sciences, College of Business, College of Engineering, College of Human Sciences, College of Liberal Arts and Sciences, College of Veterinary Medicine, ISU Extension and Outreach, University Library, Office of the Vice President for Research, and University Museums, Iowa State University, Ames, Iowa.

MORE INFORMATION

www.museums.iastate.edu
515.294.3342

PUBLICATION

An over 50-page publication with expanded biographical information will be available for purchase beginning November 1, 2017 from University Museums, Iowa State University.

IOWA STATE UNIVERSITY

Brunnier Art Museum

UNIVERSITY MUSEUMS AFFILIATE